

Agilis
JET TENDERS



355



power
stability
safety
response



do whatever you like

Make it aim at crafting flawless jet tenders Agilis puts handling and safety ahead of the game. This cornerstone concept is fully reflected in model 355. **Engineered to the highest standards** 355 makes you free to do whatever you like, whether you're at the helm enjoying a long ride, carrying a full set of passengers ashore or wakeboarding out the back.

you've got **the power**

Centrally mounted 142 hp naturally aspirated Rotax 1503 engine provides outstanding performance, balance and fuel efficiency of the watercraft. Closed loop cooling system uses coolant to keep the engine running at the ideal temperature, much like a car's radiator. This prevents corrosive saltwater from entering the engine.





leading **stability**

Expertly designed hull contributes to industry leading stability at both slow and high speeds and improves offshore performance. Inflatable tubes are made of ORCA® engineered fabrics, which is highly regarded in marine industry for its reliability and strongest resistance in rough conditions.

your level of response

Operating electronically, engine's intelligent throttle system (ITC) starts you in neutral for easy dockside starts. It also features activity-specific Touring, Sport, ECO and Ski modes that can all be set to accommodate your riding style. The result is a **more responsive, more intuitive ride.**





jet propulsion with **VTS**

The jet propulsion system with stainless steel impeller delivers surgically precise maneuverability, improved acceleration, higher top speed and less cavitation. The variable trim system (VTS) allows to adjust watercraft trim. When you trim up, you'll have a drier ride, which helps when towing. When you trim down, you can ride more aggressively while staying glued to the water.

easy docking

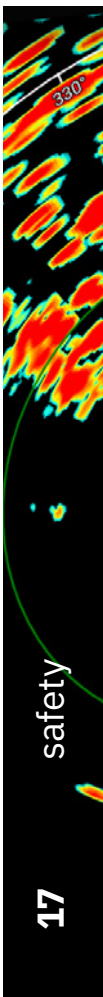
Intelligent brake and reverse system (IBR) allows you to quickly and easily switch between forward and reverse, stop much sooner and in combination with off-throttle assisted steering (O.T.A.S.) results in greater close-quarter maneuverability and easy docking.





your **safety**

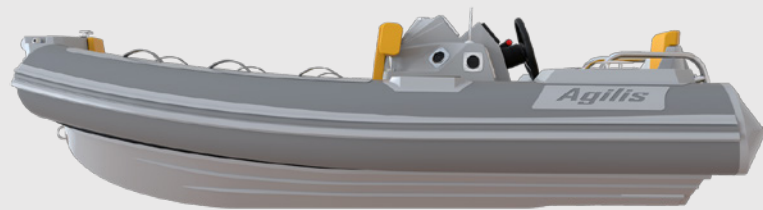
Your safety onboard Agilis 355 is backed by clear and functional instrumentation and digital dashboard, parallel power system that includes two batteries and automatic power switch. Also, at the request of the owner, 355 is equipped with automatic gas extinguishing system.



colour full

Colour scheme of inflatable tubes, upholstery and fiberglass topside is fully customizable to your preferences. The layout and tint of teak finishing that comes as standard is also variable. Cherry on the cake is the name of your yacht on board which is an option.





specs

- loa 3,55 m
- beam 1,92 m
- dry weight 390 kg
- capacity 5 persons
- performance 142 hp
- top speed 92 km/h
- fuel tank 52 l

Raymarine
Axiom7
chartplotter

Fusion
MS-
RA55

Fusion
speakers
x2

Carbon
boarding
pole

LED
deck
lights

VHF
Icom
M400BB

OceanLed
underwater
lights x2


Flex
teak 2g
finishing

Custom
colours &
materials

Name
your
boat

extra options





crafted in Germany

agilis-jettenders.com

info@agilis-jettenders.com

+49246134033315