

***Agilis***  
JETTENDERS

HANDLING AND SAFETY  
AHEAD OF THE GAME



AGILIS-JETTENDERS.COM

**355**



# **HADLING & SAFETY AHEAD OF THE GAME**

The image is a full-page advertisement for Agilis Jet Tenders. It features a dramatic seascape at sunset or sunrise. The sun is a bright, glowing orb in the upper center, casting a long, shimmering reflection across the dark, choppy water. In the foreground, the dark blue waves of the sea are in motion. In the background, silhouetted hills or mountains are visible against the hazy sky. The Agilis logo is centered in the upper half of the image, with the word 'Agilis' in a large, italicized, white sans-serif font, and 'JET TENDERS' in a smaller, all-caps, white sans-serif font directly below it.

# *Agilis*

J E T T E N D E R S







ABOUT 355

# THE HIGHEST STANDARDS

The main idea in the design of the 355 model is to combine safety and ease of control. Engineered to the highest standards 355 makes you free to do whatever you like, whether you're at the helm enjoying a long ride, carrying a full set of passengers ashore or wakeboarding out the back.

The jet tender is designed to carry six passengers and will be a perfect option for your yacht.



ENGINE

# AVAILABLE IN TWO ENGINE OPTIONS

## ROTAX 1503

AGILIS 355 is available in two engine options. Choose one of two proven Rotax engines all offering reliability, fun, performance and fuel economy: 900ACE with 90 hp or the 1503-4TEC 142 hp. Both equipped with the Advanced Combustion Efficiency (ACE) technology.

## ROTAX 900 ACE

Rotax 900 ACE power plant, the most compact and economical, yet powerful engine. Designed specifically to deliver reliable and lasting performance, this 90 hp Rotax features a closed-loop cooling system that prevents corrosive salt water from entering the engine.

HANDLING AND SAFETY AHEAD OF THE GAME









HANDLING AND SAFETY AHEAD OF THE GAME

# EASY DOCKING


INTELLIGENT BRAKE AND REVERSE (iBR) for improving boat safety and now in its third generation, the iBR system allows you to stop much sooner and in combination with off-throttle assisted steering (O.T.A.S.) results in greater close-quarter maneuverability and easy docking. With both hands on the handlebars, the driver can engage forward, neutral, and reverse for stable, worry-free maneuvering at low speeds.



THROTTLE MANAGEMENT

# YOUR LEVEL OF RESPONSE

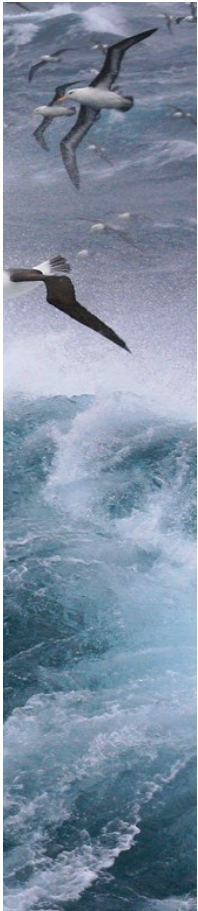
Operating electronically, engine's intelligent throttle system (ITC) starts you in neutral for easy dockside starts. It also features activity-specific Touring, Sport, ECO and Ski modes that can all be set to accommodate your riding style. The result is a more responsive, more intuitive ride.











HULL & TUBES

# LEADING STABILITY

Expertly designed hull contributes to industry leading stability at both slow and high speeds and improves offshore performance. Inflatable tubes are made of ORCA® engineered fabrics, which is highly regarded in marine industry for its reliability and strongest resistance in rough conditions.

A vertical strip on the left side of the page showing a body of water with a shoreline and some buildings in the background.

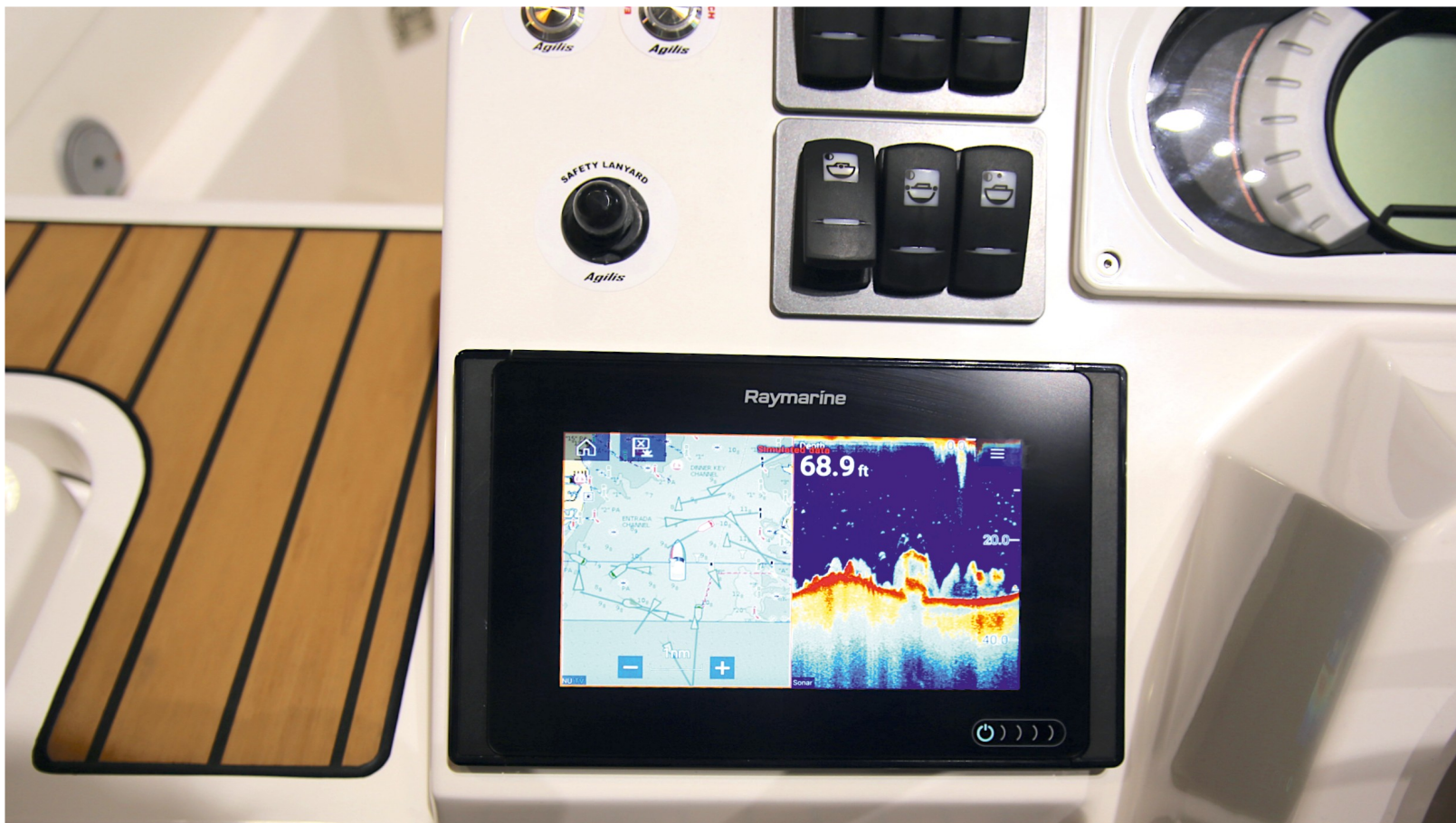
PROPULSION

# JET PROPULSION WITH VTS

The jet propulsion system with stainless steel impeller delivers surgically precise maneuverability, improved acceleration, higher top speed and less cavitation. The variable trim system (VTS) allows to adjust watercraft trim. When you trim up, you'll have a drier ride, which helps when towing. When you trim down, you can ride more aggressively while staying glued to the water.





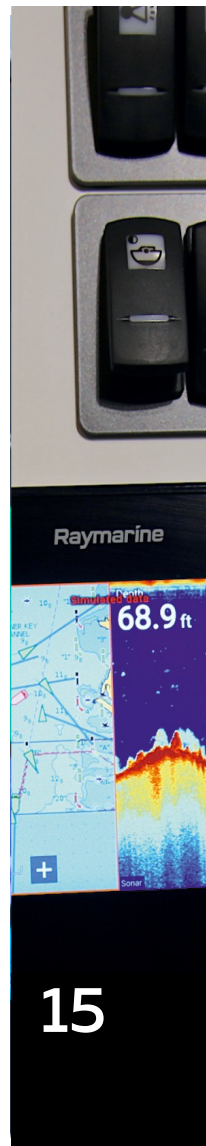




HANDLING AND SAFETY AHEAD OF THE GAME

# YOUR SAFETY

Your safety onboard Agilis 355 is backed by clear and functional instrumentation and digital dashboard, parallel power system that includes two batteries and automatic power switch. Also, 355 is equipped with automatic gas extinguishing system.



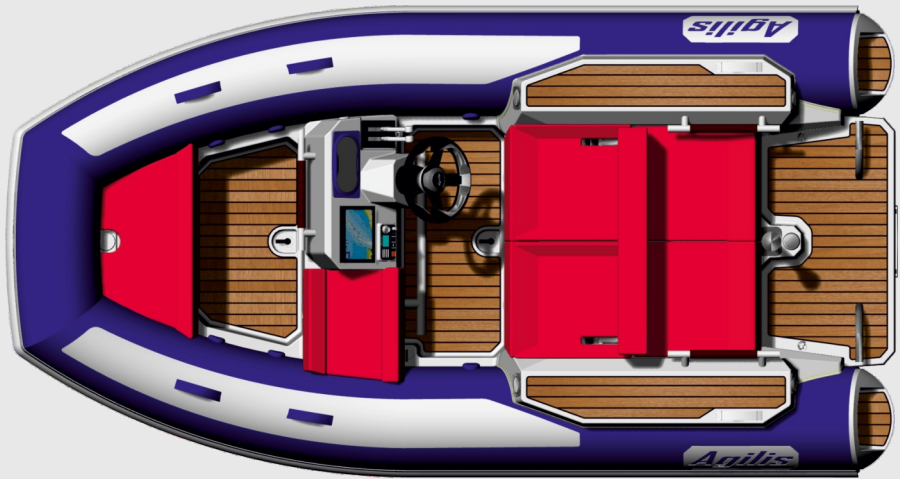


## COLOURS & FINISHING

# COLOUR FULL

The hull of Agilis 355 is designed to ensure best-in-class stability at both slow and high speeds. Inflatable tubes are made of ORCA fabrics, which are highly regarded in marine industry for their reliability and the strongest resistance to punctures, wear, and UV rays as well as perfect sound insulation. Colour scheme of inflatable tubes, upholstery and fiberglass topside is fully customizable to your preferences. The layout and tint of teak finishing that comes as standard is also variable. Cherry on the cake is the name of your yacht on board which is an option.







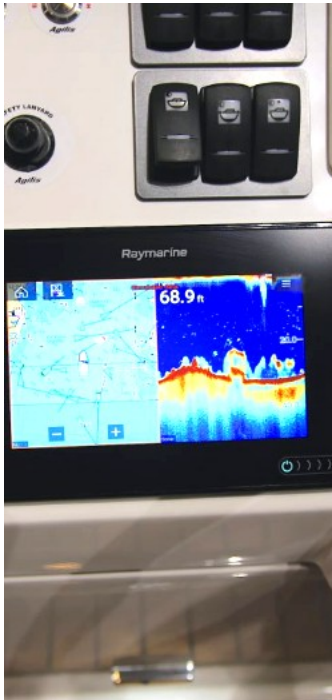
# SPECS

	Rotax 900 ACE	Rotax 1503
LOA	3,55 m	3,55 m
BEAM	1,85 m	1,85 m
HEIGHT	0,96 m	0,96 m
DRY WEIGHT	390 Kg	420 Kg
DRAFT	0,33 m	0,33 m
MAX SPEED	36 mph	46 mph
POWER	90 HP / 66 KW	104,4 KW / 142 hp
FUEL CAPACITY	55 Litres	55 Litres
SEATING	6	6
MASS (fully loaded)	823 Kg	823 Kg
DESIGN CATEGORY	C	C



# EXTRA OPTIONS

RAYMARINE  
AXIOM 7  
CHARTPLOTTER



FUSION  
MS-  
RA55



FUSION  
SPEAKERS  
X2



CARBON  
BOARDING  
POLE



LED  
DECK  
LIGHTS



## HANDLING AND SAFETY AHEAD OF THE GAME

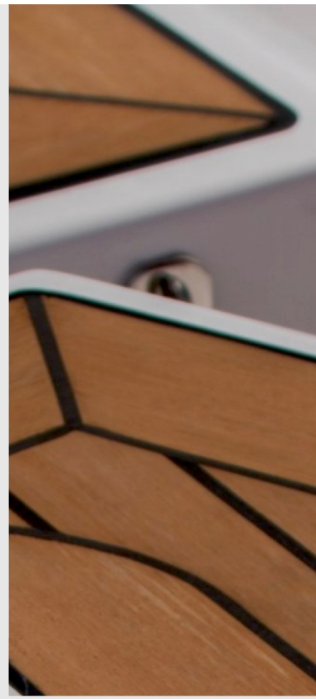
VHF  
ICOM  
M 400BB



OCEANLED  
UNDERWATER  
LIGHTS X 2



FLEX  
TEAK 2G  
FINISHING



CUSTOM  
COLOURS &  
MATERIALS



NAME  
YOUR  
BOAT





**AGILIS-JETTENDERS.COM**

**INFO@AGILIS-JETTENDERS.COM**

**+49 (0) 246134033315**

***Agilis***  
JET TENDERS